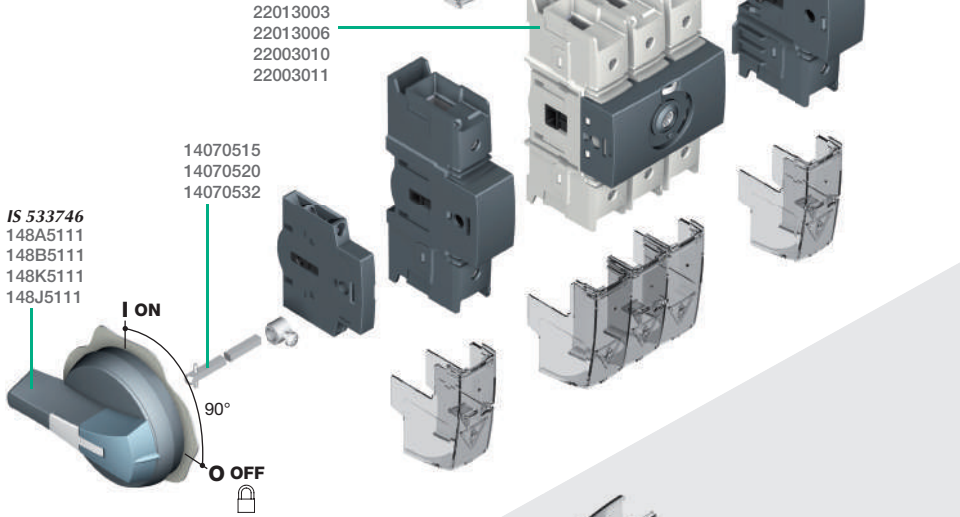


IS 534924 - E
Instruction sheet

A

Left side operation
Commande latérale gauche
Mando lateral izquierdo

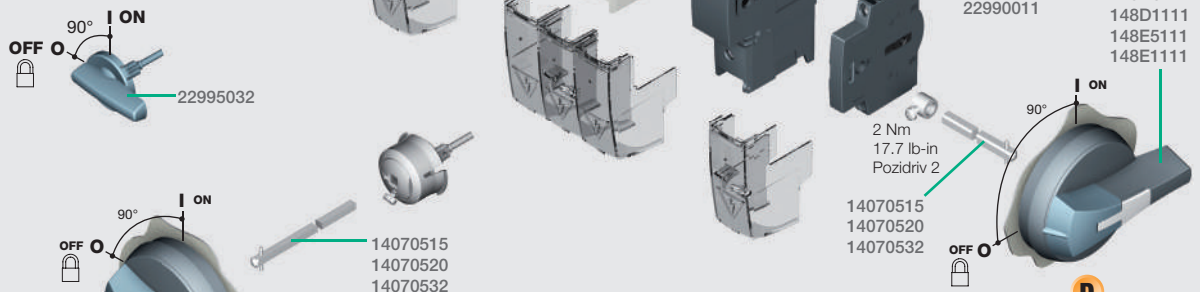


Edition 03/10 - IS 534924-E / RECTO-VERSO / S blanc offset quadrif 80g/m²



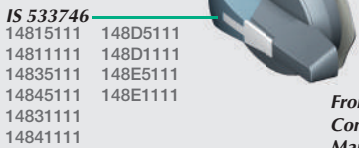
B

Direct operation
Commande directe
Mando para accionamiento directo



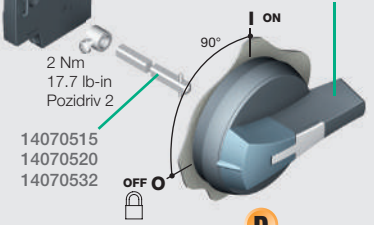
C

Front operation
Commande frontale
Mando frontal



D

Right side operation
Commande latérale droite
Mando lateral derecho



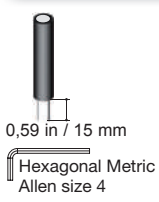
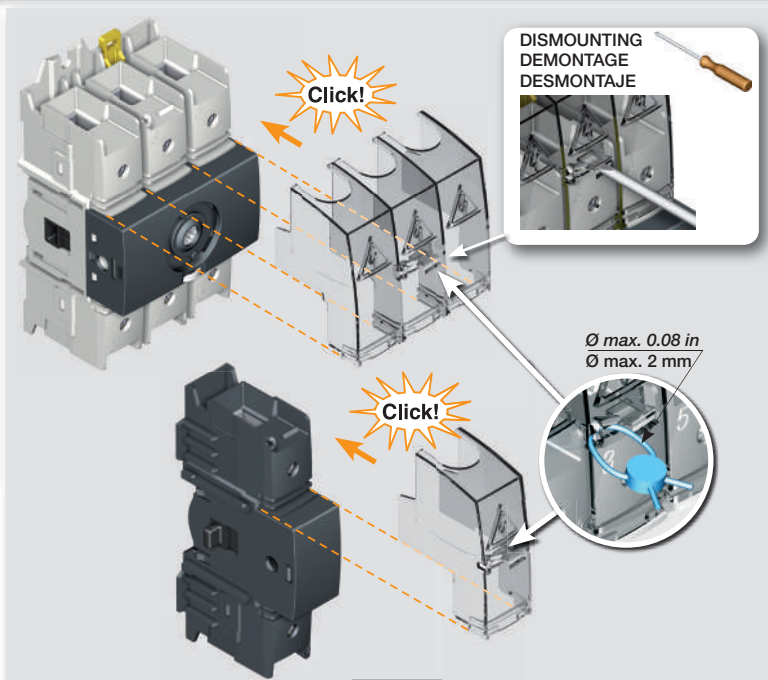
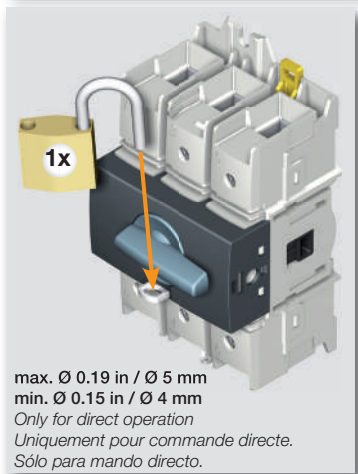
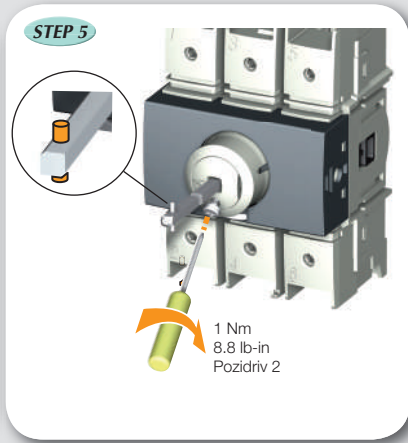
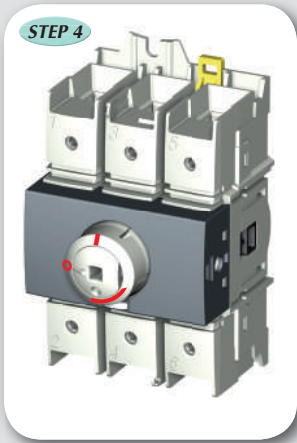
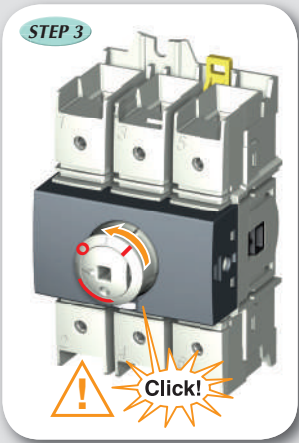
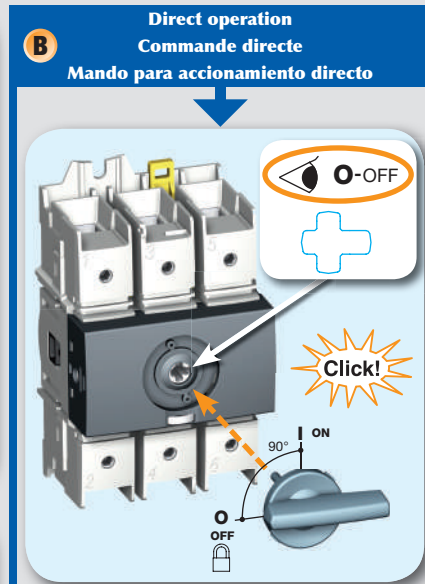
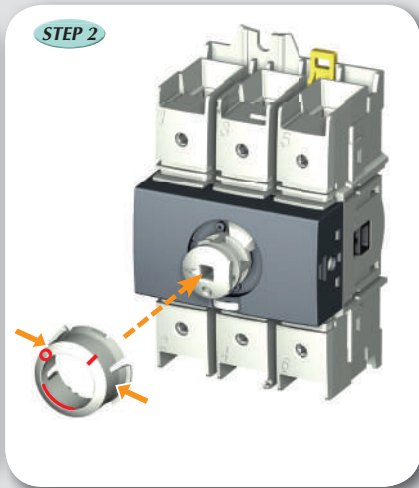
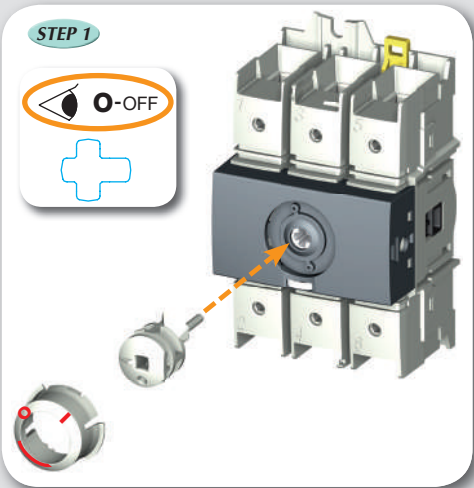
⚠ DANGER / PELIGRO

HAZARDOUS VOLTAGE. This equipment must be installed and serviced only by qualified electrical personnel. Turn off all power supplying this equipment before working on or inside equipment. Always use a properly rated voltage sensing device to confirm power is off. Replace all devices, doors, and covers before turning on power to this equipment. **Failure to follow these instructions will result in death or serious injury.**

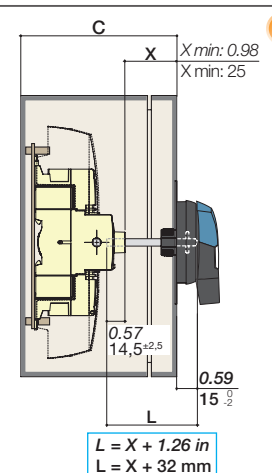
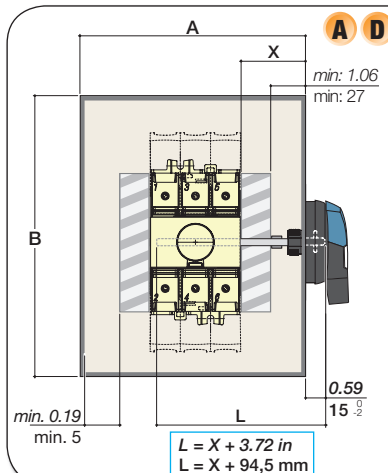
TENSION DANGEREUSE. L'installation et l'entretien de cet appareil ne doivent être effectués que par du personnel qualifié. Coupez l'alimentation de cet appareil avant d'y travailler. Utilisez toujours un dispositif de détection de tension à valeur nominale approprié pour confirmer que toute alimentation est coupée. Remplacez tous les dispositifs, les portes et les couvercles avant de mettre cet appareil sous tension. **Si ces précautions ne sont pas respectées, cela entraînera la mort ou des blessures graves.**

TENSION PELIGROSA. Solamente el personal de mantenimiento eléctrico especializado deberá instalar y prestar servicios de mantenimiento a este equipo. Desenergice el equipo antes de realizar cualquier trabajo en él. Siempre utilice un dispositivo detector de tensión adecuado para confirmar la desenergización del equipo. Vuelva a colocar todos los dispositivos, las puertas y las cubiertas antes de energizar este equipo. **El incumplimiento de estas precauciones podrá causar la muerte o lesiones serias.**

C
Front operation
Commande frontale
Mando frontal



Wire / Câble / Cable	Torque / Couple / Par de apriete
6 mm ² - 50 mm ² stranded	35.4 lb-in / 4 Nm
10 to 1 AWG stranded	35.4 lb-in / 4 Nm
1/0 AWG stranded	39.8 lb-in / 4.5 Nm
2/0 AWG stranded	44.3 lb-in / 5 Nm
2/0 AWG compact stranded	48.7 lb-in / 5.5 Nm
10 mm ² - 70 mm ² solid	35.4 lb-in / 4 Nm
# 12 to # 10 AWG solid	35.4 lb-in / 4 Nm



Minimum enclosure dimensions
Dimensions minimum des coffrets
Dimensiones mínimas de las cajas
*UL standard

	22013003	22013006	22003010	22003011
A in	8	8	8	8
A mm	203	203	203	203
B in	12	12	14	14
B mm	305	305	356	356
C in	6	6	6	6
C mm	153	153	153	153

